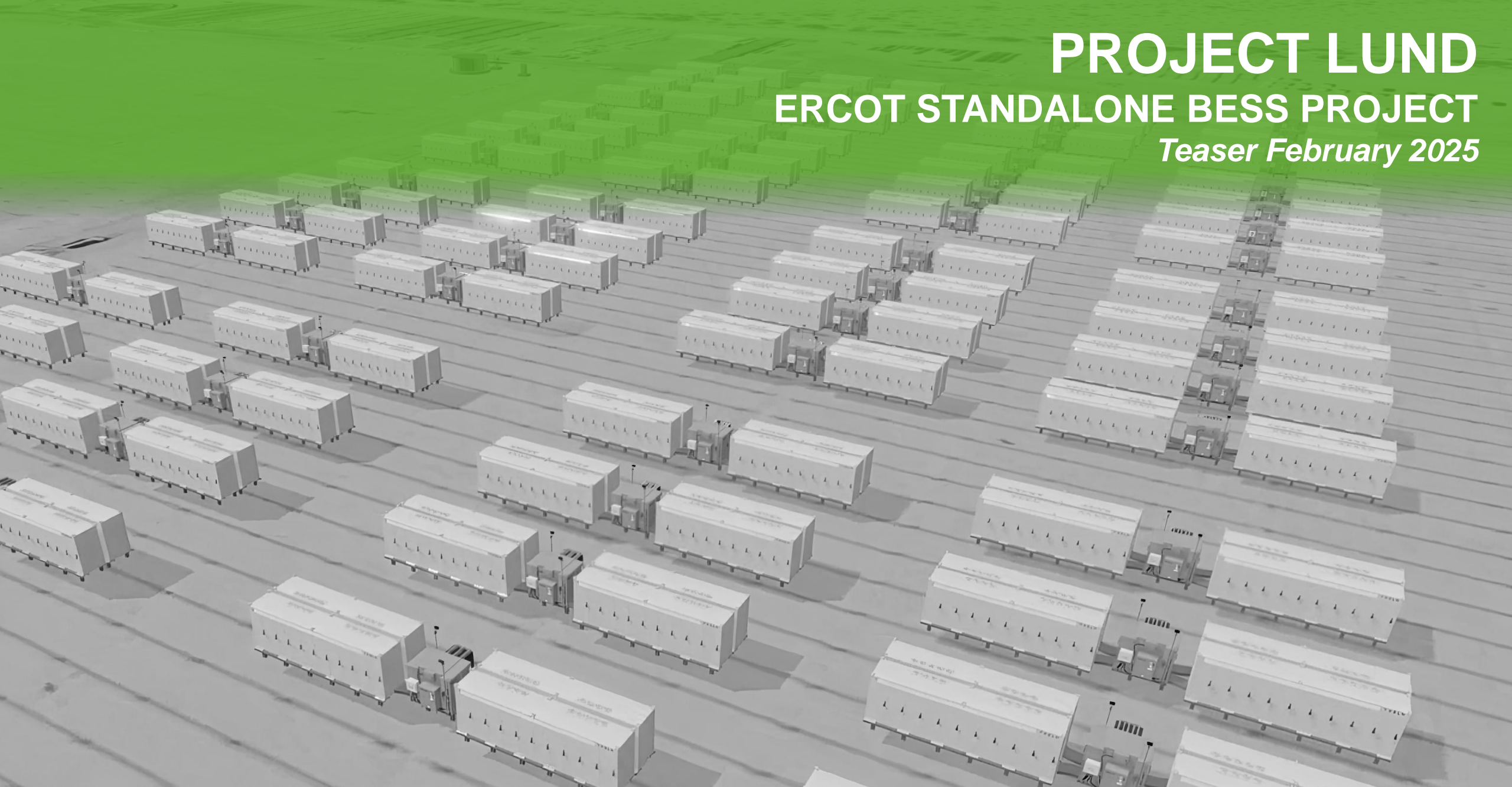


# PROJECT LUND

## ERCOT STANDALONE BESS PROJECT

*Teaser February 2025*

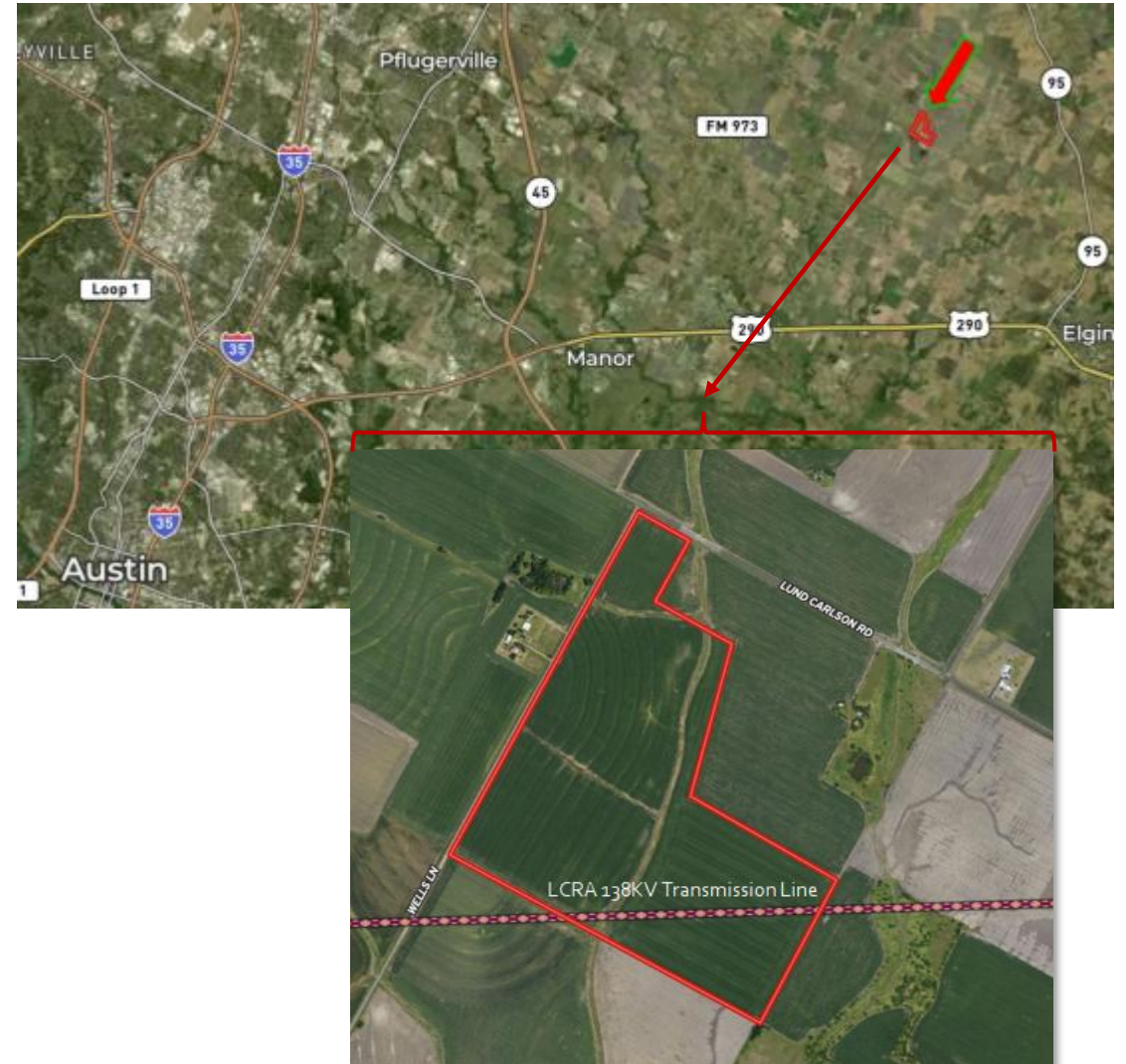


## Project Overview

Lund Storage Center is one of the largest standalone BESS projects in Texas, located closest to the highest load growth area.

<b>Project Name</b>	<b>Lund Storage Center</b>
<b>BESS Sizing (MW<sub>dc</sub>) / POI Power Capacity (MW<sub>ac</sub>)</b>	428.0 MW <sub>dc</sub> / 407.55 MW <sub>ac</sub> (20% additional allowed as per ERCOT, subject to LCRA's final approval)
<b>BESS Capacity (MWh)</b>	856.0 MWh
<b>Operation</b>	ERCOT Wholesale Market Participation; Energy Arbitrage, Ancillary Services
<b>Coordinates</b>	30.4143, -97.4331
<b>County</b>	Travis County
<b>Load Zone</b>	ERCOT South
<b>Equipment</b>	Li-Ion BESS
<b>Interconnection</b>	ERCOT Queue #: 26INR0045 FIS currently in progress SGIA expected to execute in February 2025
<b>POI Voltage</b>	138 kV LCRA Transmission Line New Substation at POI to be constructed by LCRA
<b>Target NTP / COD</b>	Q4 2025 / Q2 2027
<b>Environmental &amp; Permitting</b>	Environmental: No known material constraints Minerals: All waivers secured and complete
<b>Project Land Acquisition</b>	Lease Option Secured, ~50 acres for Project Site

## Project Location





# Process and Contacts

---

## Cyrus Etemadi

*Managing Director*

Mobile: 512.363.2142

cyrus@fractaladvisory.com

## Aaron Barker

*Director of Due Diligence*

aaron@fractalba.com

---

**THIS PRESENTATION, THE INFORMATION SET FORTH HEREIN AND ANY OTHER INFORMATION RELATED HERETO IS PRELIMINARY ONLY.**

**NONE OF BESS POWER CORPORATION OR ANY OF ITS AFFILIATES MAKES, NOR SHALL BE DEEMED TO HAVE MADE, ANY REPRESENTATION OR WARRANTY, EXPRESS, IMPLIED, STATUTORY OR OTHERWISE, WITH RESPECT TO THE ACCURACY OR COMPLETENESS OF ANY SUCH INFORMATION, NOR SHALL BESS POWER CORPORATION OR ANY OF ITS AFFILIATES HAVE ANY LIABILITY TO THE RECIPIENT OF SUCH INFORMATION OR ANY OTHER PERSON OR ENTITY RESULTING FROM THE USE OF SUCH INFORMATION.**

All contact should be made exclusively through Fractal Advisory. Under no circumstances should the management, personnel and/or contractors of BESS Power Corporation or any of its respective affiliates or partners be contacted directly regarding the Transaction or the information contained herein. Violation of this protocol may result in disqualification from the process in addition to any other rights that BESS Power Corporation may have under any applicable Confidentiality Agreement or otherwise.