

Project Silver Steel

ERCOT Standalone Storage Portfolio

Teaser
January 2025

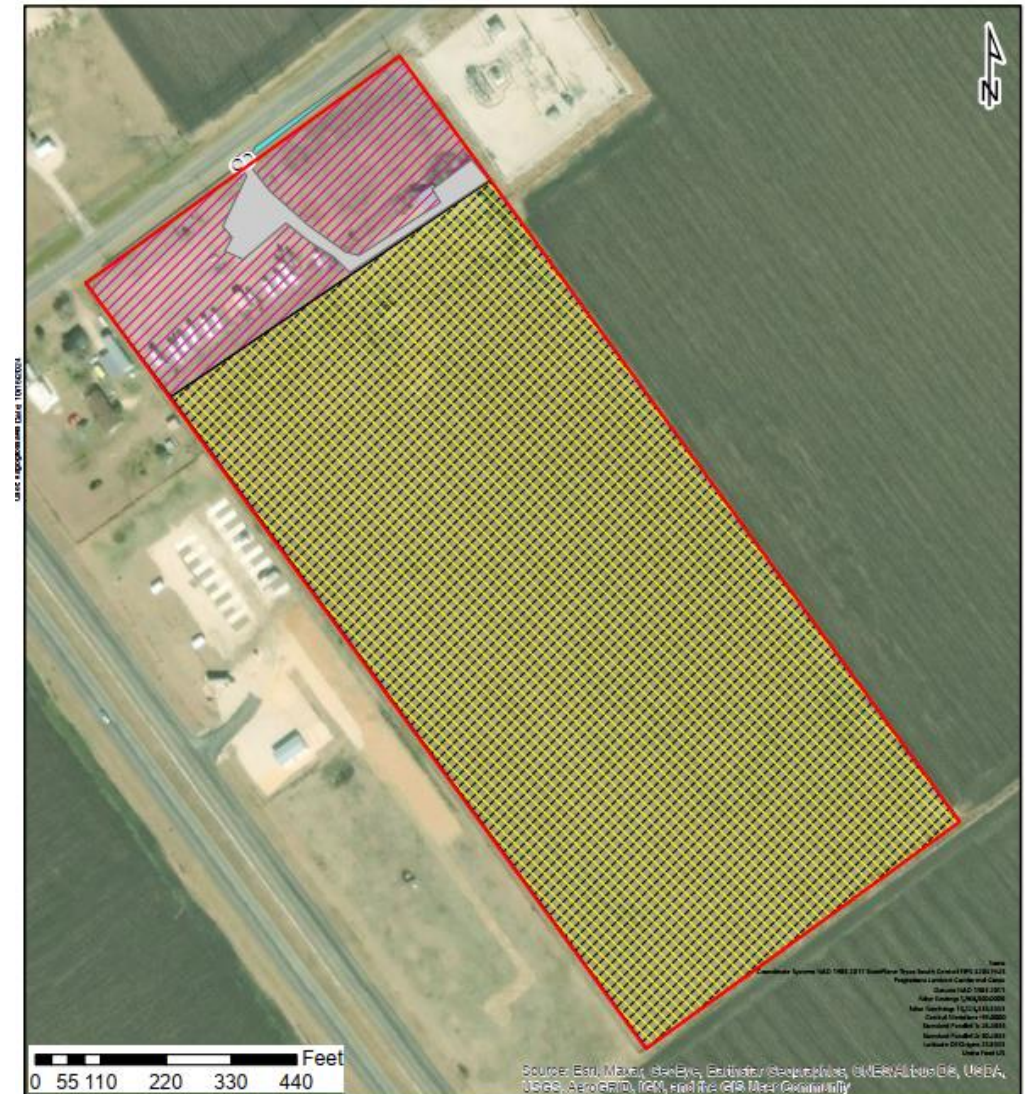


Project Overview

- Concurrent has developed a standalone storage project in Victoria County, Texas.

Site Name	Chocolate Bayou
Power (MW)	9.99
Capacity (MWh)	33.3 (option to decrease to 20.0)
Operation	Concurrent Toll offtake provided (5 Years, 0% escalation)
Coordinates	28.68529, -96.91962
County	Victoria County
Load Zone	ERCOT South
Equipment	Li-Ion BESS
Interconnection	AEP Interconnection Study Received AEP Interconnection Agreement fully executed
POI Voltage	12.47kV – Chocolate Bayou substation (Bus #80064)
Target COD	Q2 2026
Environmental & Permitting	No County requirements or ordinances
Project Land Acquisition	Lease Option Secured, option for ~12 or 24 acres

Project Location



Project Overview

- Concurrent has developed a standalone storage project in La Salle County, Texas.

Site Name	Cotulla
Power (MW)	9.9
Capacity (MWh)	33.3 (option to decrease to 20.0)
Operation	Concurrent Toll offtake provided (5 Years, 0% escalation)
Coordinates	28°26'51.57"N, 99°15'13.48"W
County	La Salle County
Load Zone	ERCOT South
Equipment	Li-Ion BESS
Interconnection	AEP Interconnection Study Received AEP Interconnection Agreement fully executed
POI Voltage	12.47kV – Cotulla substation
Target COD	Q2 2026
Environmental & Permitting	No County requirements or ordinances
Project Land Acquisition	Land purchased, 2.16 acres

Project Location



Process and Contacts

Cyrus Etemadi

Managing Director
Mobile: 512.363.2142
cyrus@fractaladvisory.com

Aaron Barker

Director of Due Diligence
aaron@fractalba.com

THIS PRESENTATION, THE INFORMATION SET FORTH HEREIN AND ANY OTHER INFORMATION RELATED HERETO IS PRELIMINARY ONLY.

NONE OF CONCURRENT OR ANY OF ITS AFFILIATES MAKES, NOR SHALL BE DEEMED TO HAVE MADE, ANY REPRESENTATION OR WARRANTY, EXPRESS, IMPLIED, STATUTORY OR OTHERWISE, WITH RESPECT TO THE ACCURACY OR COMPLETENESS OF ANY SUCH INFORMATION, NOR SHALL CONCURRENT OR ANY OF ITS AFFILIATES HAVE ANY LIABILITY TO THE RECIPIENT OF SUCH INFORMATION OR ANY OTHER PERSON OR ENTITY RESULTING FROM THE USE OF SUCH INFORMATION.

All contact should be made exclusively through Fractal Advisory. Under no circumstances should the management, personnel and/or contractors of Concurrent or any of its respective affiliates or partners be contacted directly regarding the Transaction or the information contained herein. Violation of this protocol may result in disqualification from the process in addition to any other rights that Concurrent may have under any applicable Confidentiality Agreement or otherwise.